



ACCESSIBILITY GUIDE

A guide to aid with accessibility at the Wellcome
Genome Campus

This guide provides information about accessible parking and level access at the main entrances to the following buildings at the Wellcome Genome Campus: Security Reception, Sulston Building (including DiNA café), Morgan Building, Hinxton Hall, Conference Centre, EBI Main building, EBI South Building, Ogilvie Building, the Biodata Innovation Centre, West Pavillion and Cairns Building (Murrays Restaurant and Pebbles Cafe). It also provides information in relation to the location of: accessible toilets, lifts and steps and auxillary aids including hearing loops. The guide provides information in relation to accessible residential accommodation and accessible ensuite bathrooms in the Mulberry and Willow Accommodation Blocks.

Brian Paice

Car Park

- Parking is free for all users.
- The car park is A for day visitors and Mulberry for residential guests
- All parking spaces are provided on a first come first served basis.

Accessible parking	Car park A	Mulberry Car park
Is the car park type is open air/surface?	Yes	Yes
Number of designated parking spaces	12	3
Parking bay dimensions	2.3m x 4.8m	2.2m x 6.3m
Wheelchair users may require assistance from the car park to the entrance because there are dropped kerbs	Yes	No
The car park surface is	Tarmac.	coated with pea shingle
Does the guest have to cross a road?	Yes; there is a pedestrian crossing in place with dropped kerbs	Yes; the route is flat
Does the car park have height restriction barriers?	No	No



Car park A; parking for disabled.



Pedestrian access from car park A to campus.



Access & parking at Mulberry Court.

Outside Access Non Residential (Main Entrance)

- The door opening is a minimum of 85cm wide.

	Reception	Morgan	EBI Main	EBI South	Ogilvie	BIC	West Pav.
Is the access flat and level?	Yes	Yes	No	Yes	Yes	Yes	Yes
Is there a sloped access?	No	No	Yes	No	No	No	No
Is the slope easy?	N/A	N/A	Yes	N/A	N/A	N/A	N/A
Are the doors single width?	Yes	No	Yes	No	Yes	Yes	No
Are the doors double width?	No	Yes	No	Yes	No	No	Yes
Are the doors sliding or swinging	Auto slide	Auto slide	Auto slide	Auto slide	Auto swing	Auto swing	Manual swing/heavy

	Sulston	Conference centre	Hinxton Hall	Mulberry	Willow
Is the access flat and level?	Yes	Yes	No	Yes	Yes
Is there a sloped access?	No	No	Yes	No	No
Is the slope easy?	N/A	N/A	No/steep	N/A	N/A
Are the doors single width?	No	No	Yes	Yes	Yes
Are the doors double width?	Yes	Yes	No	No	No
Are the doors sliding or swinging	Auto slide	Auto slide	Auto slide	Auto slide	Manual swing/heavy



Sulston Access



EBI main building ramp



Access route to Ogilvie
and BIC receptions



Pedestrian access around campus

Reception All buildings

- There is level access to reception from the entrance.
- The reception desks have a lowered section for wheel chair access.
- The lighting levels are medium.
- There is a hearing assistance system.
- Team members are trained to use the hearing assistance system.
- Team members can provide clipboards to any guest who is unable to use the desk.

Inside access

- There is level access once inside
- The lighting levels are varied.

Restaurant



- Access to Cairns Building; revolving door with automatic self- opening door
- There is level access to the restaurant.
- Restaurants are a mixture of self-service, and counter service
- There is ample room for a wheelchair user to manoeuvre.
- No tables are permanently fixed.
- No chairs are permanently fixed.
- Some chairs have armrests.
- The distance between the floor and the lowest dining table is 75cm.
- The distance between the floor and the highest dining table is 89cm.
- Menus are on counter stands
- Picture menus are not available.
- Menus are clearly written, in English only.
- Menus are presented in contrasting colours black print on white background

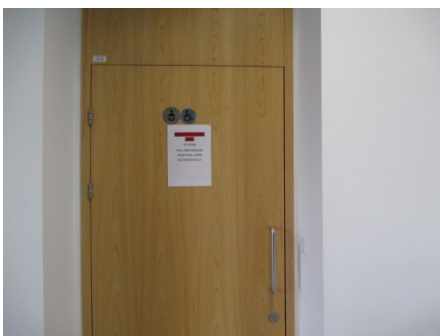
Auxiliary Aids

- There is a fixed hearing assistance system on receptions.
- Team members are trained to use the hearing assistance system.
- Vibrating pillows on request Willow.
- Bath mats are available on request.
- All televisions have subtitles available.
- Assistance dogs are welcomed to stay with guests in rooms.

Other floors and lifts

- There is a lift provided in: Sulston, EMBL EBI, Morgan, West Pav, EMBL EBI South, Ogilvie, BIC and Mulberry buildings.
- The lifts areas shown on the drawing and directions will be given from reception
- All floors are accessible by this lift.
- There are not separate entry and exit doors in the lift.
- There is a mirror to aid reversing out of the lift.
- The lift does have a visual floor indicator.
- The lift does have an audible announcer.
- The controls for the lift are within reach for a wheelchair user.
- The lift does have Braille markings.
- The lift does have tactile markings.
- There are 15+ steps between floors.
- The lighting levels are medium.
- The steps are clearly marked.
- The steps are medium.
- The steps do have handrails.
- The steps have a handrail on both sides.
- There is a landing.

Accessible toilets



Powered door to WC in Sulston reception Typical disability WC

- There are accessible toilets within each building.
- Location of and access to accessible toilets shown on attached plan
- The toilet is not for the sole use of disabled people.
- There is pictorial signage on or near the toilet door.
- There is level access to the accessible toilet.

Features and dimensions of accessible toilets

- A key is not required for the accessible toilet.
- The door opens outwards.
- The door is locked by a twist lock.
- The door is heavy or power assisted.
- Floor manoeuvring space is clear in the accessible toilet.
- There is a lateral transfer space.
- As you face the toilet pan the transfer space is on the left.
- There is a dropdown rail on the transfer side.
- There is a flush on the transfer side.
- The tap type is lever.
- There is a mixer tap.
- There is a functional emergency alarm available.
- There is not a coat hook.

Position of fixtures in accessible toilets

- Wall mounted grab rails are available.
- There is not a shelf within the accessible toilet.
- There are mirrors in the accessible toilet.
- Mirrors are placed at a lower level or at an angle for ease of use.
- The height of the toilet seat above floor level is 49cm.
- There is a hand dryer.
- The hand dryer cannot be reached from seated on the toilet.
- The hand dryer is not placed higher than 100cm.
- There is not a towel dispenser.
- There is a toilet roll holder.
- The toilet roll holder can be reached from seated on the toilet.
- The toilet roll holder is not placed higher than 100cm.
- There is a sink.
- The sink cannot be reached from seated on the toilet.
- The sink is not placed higher than 74cm.
- Colour contrast and lighting in accessible toilets
- The contrast between the internal door and wall is good.
- The contrast between the external door and wall is good.
- The contrast between the grab rails and wall is fair.
- The contrast between the drop down rails and wall is good.
- The contrast between the walls and floor is good.
- Lighting levels are medium.

Residential Accessible rooms

Facilities	Mulberry	Willow
Which level are the accessible rooms located	Level 1 x 2, level 2 x 2	Level 1 x 2
There is level access to the rooms from the entrance	Yes Level 1	Yes
There is a lift	Yes	No
The lift is fire safe	No	N/A
Guests need to open a door between the entrance and the rooms.	Yes	Yes



Refuge point level 2 Mulberry

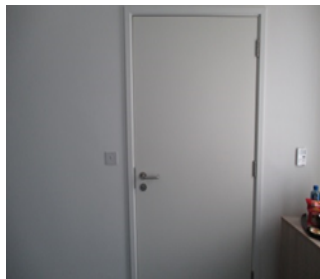
Bedroom Features

Facility	Mulberry	Willow
The width of the door is	90cm	90cm
The bed type is standard Divan and mattress	Yes	Yes
The height of the bed is	60cm	60cm
The measurement between the bed base and floor is.	10cm	10cm
Light switches from floor level.	115cm	115cm
There are lowered spy holes available.	Yes	Yes
There is a no functional emergency alarm available in the room.	No	No
Vibrating pillow alarm attached to the fire alarm	No	Yes

Ensuite Features



Ensuite in Mulberry



External ensuite door Mulberry



External hotel room door

Facility	Mulberry	Willow
The width of the door to the ensuite is	90cm	76cm
The door opens by pulling	Yes	Yes
The door weight is light	Yes	Yes
The door does have a lock.	Yes	Yes
The dimensions of the ensuite are	290cm x 190cm	270cm x 220cm
The ensuite is a wet room.	Yes	Yes
The shower head height is adjustable	Yes	Yes
The shower control type is twist/turn.	Yes	Yes
The shower seat is flip down.	Yes	Yes
The shower seat height is	48cm	48cm
There are handrails available	Yes	Yes
There is a lateral transfer space	Yes	Yes
There is a dropdown rail on the transfer side	Yes	Yes
The flush is located	Central button	Lever right side
Wall mounted grab rails are available	Yes	Yes
As you face the toilet, the wall mounted grab rails are on both sides	Yes	Yes
The height of the toilet seat is	47cm	47cm
The toilet roll holder can be reached from seated on the toilet.	Yes	Yes
The toilet roll holder is not placed higher than	100cm	100cm
The sink can be reached from seated on the toilet	No	No
The height of the sink is	74cm	74cm
The tap type is lever	Yes	Yes
There is a mixer tap for the sink.	Yes	Yes
There is a functional emergency alarm available in the ensuite.	Yes	Yes
This is pull cord located next to the toilet and one next to the shower	Yes	Yes
There are mirrors. Mirrors are placed at a lower level or at an angle for ease of use	Yes	Yes

Colour Contrast and Lighting

Facility	Mulberry	Willow
The colour contrast between the external hotel room door and wall is good.	Yes	Yes
The colour contrast between the walls and floor is good	No	Yes
The colour contrast between the internal hotel room door and wall is good.	Yes	Yes
The colour contrast between the external ensuite door and wall is good	No	Yes
The colour contrast between the internal ensuite door and wall is good	No	Yes
The colour contrast between the walls and floor in the ensuite is good.	No	Yes
The colour contrast between the drop down rails and wall is good	No	Yes
The colour contrast between the grab rails and wall is good;	No	Yes
The lighting levels are bright.	Yes	Yes

Access Icons



Level Access and automatic doors



Accessible Accommodation



Access by ramps, slopes and/or manual doors



Sign Language used



Mobility Impaired Walker



Disability Awareness / Equality Training



Seat Available



WC Accessible



WC Standard



Accessible Changing Rooms



Changing Places Facilities



Large Print



Braille



Hearing System



Contacting the venue



Home Service



Parking 3 stars

The venue has its own car park for use by patrons

This symbol will also be applied for venues within for example a shopping centre/retail park served by a car park belonging to the shopping centre/retail park as a whole



Parking 2 stars

Blue Badge on street parking available

This will be given if:

- There is on street Blue Badge parking in the immediate vicinity of the venue or;
- The venue can provide parking if booked in advance to Blue Badge holders.
- This last point could refer to a venue which has a car park for staff only but are happy to reserve a space for a Blue Badge holder.
- All local parking restrictions should be checked before visiting the venue

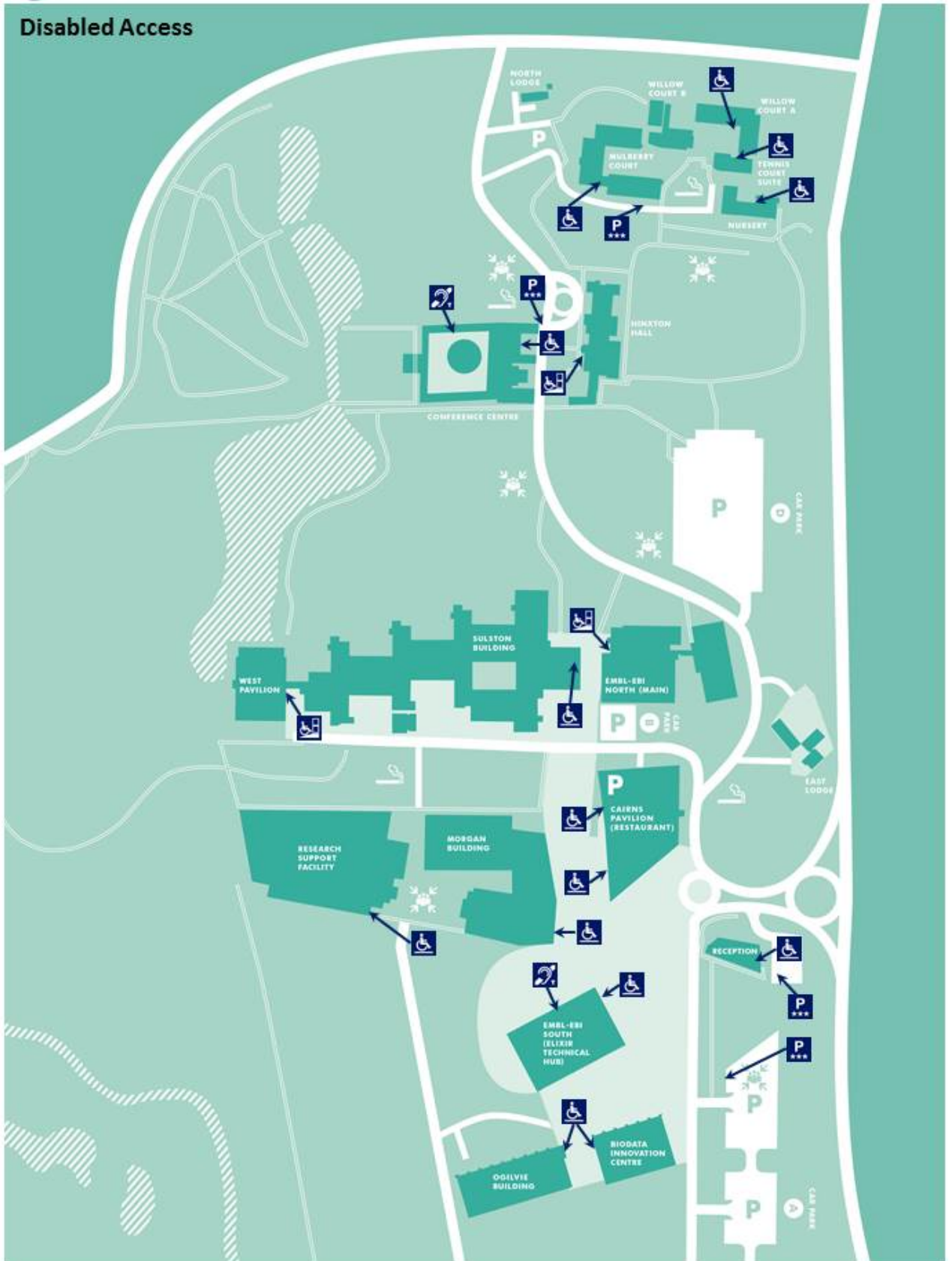


Parking 1 star

Public Car Park near to the venue

This symbol indicates that there is a public car park within approximately 200 metres of the venue. This will refer to car parks such as NCP or council car parks.

Disabled Access



Disabled Facilities

